

RAILWAY SYSTEMS



• OHE • ROLLING STOCK • TRACK • SIGNAL & TELECOM • STATIONS

One of Asia's Largest Manufacturer / Exporter of Cable Accessories, Earthing & Lightning Protection Systems



HEX - BCA factory at Vapi, Gujarat



HEX - HCA factory at Jamnagar, Gujarat

Welcome to the fascinating world of HEX.

This globally renowned brand is very well known in the arena of cable lugs, cable glands, other cable accessories, crimping tools & Earthing & Lightning Protection Systems & accessories.

The vast HEX range of products is manufactured by Brass Copper & Alloy (I) Ltd. which started its operations in 1991. This humble beginning made in a small workshop, has grown into one of Asia's largest industry offering a wide range of advanced solutions, services & products.

Our large & diverse base of valuable customers spread all over India & in most countries worldwide are a testimony to the history of our dedication & growth. The values on which this company was founded continue to spur us on even today towards the goals which we are committed to achieve for a sustainable future.

For us, sustainability means acting in the best interest of coming generations – with respect to the economy, the environment and society.

As you browse through our catalogue, we hope you will find what you are looking for. If not, just share your requirement with us or give us a call. If it is relevant to our line of work, we will be happy to provide a solution.

OTHER PRODUCTS MANUFACTURED BY HEX

CABLE TERMINAL ENDS & CONNECTORS



BRASS CABLE GLAND KITS & ACCESSORIES



CRIMPING TOOLS



EARTHING & LIGHTNING PROTECTION SYSTEMS



MCF APPROVAL

MODERN COACH FACTORY RAEBARELI

Office of the
Principal Chief Electrical Engineer
Modern Coach Factory, Raebareli

No. MCF/RBL/CEE/18255/Vol-I

Date: 03.11.2021

Brass Copper and Alloy India Limited
15, Mehta Mahal, 2nd Floor, Mathew Road,
Charni Road East Opera House Mumbai,
Maharashtra-400004

Sub :- Regarding Updation of your firm status in electrical vendor directory.

Ref :- Firm request letter No. BCA/BM/0209, Dated: 02.09.2021.

Vide reference above, your firm request for status Updation in vendor directory has been scrutinized by this office and approved by competent Authority, Revised details are given below:-

Item Name: -COPPER CRIMPING SOCKET
Specification: -EDTS 200, AM-1 &2, CORR.-3 & EDTS 201, REV.-A, AM-3, Corr-3,
PL No. -42411350, 42900015, 42900037, 42980010, 42980367, 42980616, 42980884,
42981207, 42981694, 42981827, 42982200, 42982297, 42983526, 42988461,
42984968, 45982004.

| Firm Name | Previous Status | Revised Status | Remark |
|---|-----------------|----------------|---|
| M/s Brass Copper and Alloy India Limited, Mumbai Address: 15, Mehta Mahal, 2 nd Floor, Mathew Road, Charni Road (East) , Opera House Mumbai-400004. Works: Plot No. 11 at Vadkhambha, Tal. Kaparada, Distt. Valsad, Gujarat-396126 | Developmental | Regular | Being group of items, approval status of the firms shall remain same for all the items covered under this group of items. Firms shall however be required to get prototype approved for each items separately if he has not supplied the same successfully earlier. |

This change will be updated, in vendor directory when next amendment issued.

Copy to:

Dy. CMM/EL
Modern coach Factory
Lalganj/Raebareli


Dy. CEE/D&D
Modern Coach Factory, Raebareli

उप मुख्य विद्युत अभियंता
(डिजाइन एवं ड्राइंग)
आधुनिक रेल डिब्बा कारखाना/राबरेली
Dy. CEE/D&D/MCF/RBL.

RCF APPROVAL



IREPS
EB2

Indian Railways E- Procurement System

Unified Vendor Approval Module



HEMANT MAGANLAL MEHTA., BRASS
COPPER AND ALLOY INDIA LIMITED-
MUMBAI (IREPS ID- 41936)

17-Jun-2023
15:07:13 IST

Vendor Directory (Published)

| | | | |
|------------------|------------------|------------------------------------|----------|
| Organization | Indian Railway ▼ | Item/Sub-Item Description/ID/PL No | crimping |
| Approving Agency | RCF ▼ | Specification | |
| Department | --All-- ▼ | Drawing | |
| Sub-Directorate | ▼ | STR | |
| Reference Date | 17/06/2023 | Items Per Page | 5 |

Proceed

Total : 1

Vendor Directory status as of 17/06/2023 15:06

Approved Vendors (Vendor Count: 5)

M/s BRASS COPPER AND ALLOY INDIA
LIMITED-MUMBAI
(ID- 41936)

Regd Add. : 2ND FLOOR, A/2, MEHTA
MAHAL,PADMAKAR L KHANDKE MARG,
MATHEW ROAD,OPERA HOUSE,

Unit-1

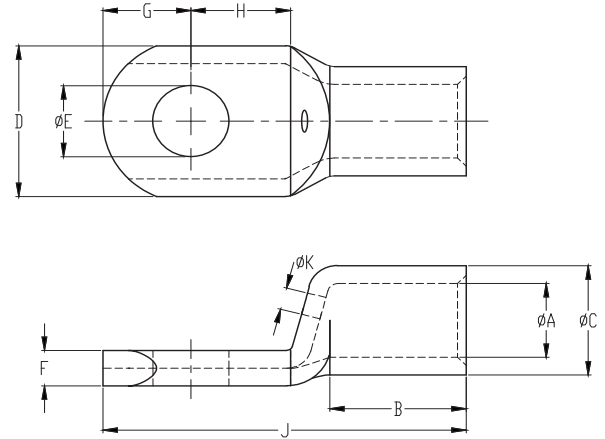
Plot No-11, At Vadkhambha, Tal.:-
Kaparada Valsad,Gujarat - 396126, India

Current status since - 11/02/2022

CERTIFICATE

**MCF/RCF/ICF
TUBULAR CRIMPING SOCKETS/LUGS
FOR E-BEAM CABLES**

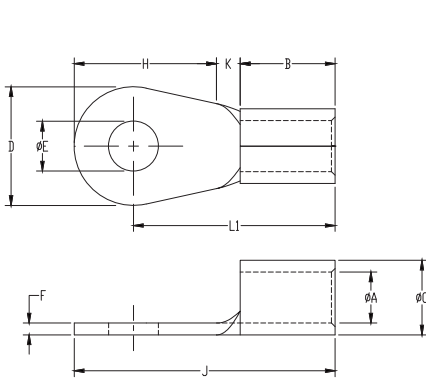
Spec. : EDTS-200 (as per active version)
Material : Copper
Finish : Tinned Plated



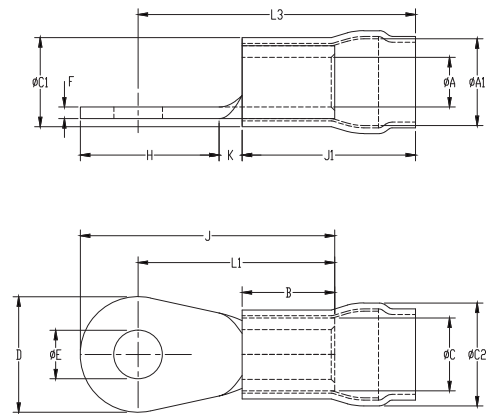
| Cable Size | MCF/ICF/RCF | STUD Size | Stud Hole Size | Barrel ID | Barrel OD | Palm Width | Palm Thickness | Barrel Length | Stud Center Distance from Barrel | Stud Center Distance from Top | Total Length | Inspection Hole | Product Code |
|-----------------|-------------|-----------|----------------|-----------|-----------|------------|----------------|---------------|----------------------------------|-------------------------------|--------------|-----------------|--------------|
| mm ² | Item No. | mm | E | A | C | D | F | B | H | G | J | (Ø K) | |
| 16 | 17 | M6 | 6.5 | 5.8 | 8.5 | 11.9 | 2.7 | 14 | 10 | 6 | 33 | Ø3 | HTIR 16-6 |
| 16 | 16 | M8 | 8.2 | 5.8 | 8.5 | 16 | 1.9 | 14 | 11 | 9 | 37 | Ø3 | HTIR 16-8 |
| 16 | 15 | M10 | 10.2 | 5.8 | 8.5 | 16 | 1.9 | 14 | 11 | 9 | 37 | Ø3 | HTIR 16-10 |
| 25 | 14 | M8 | 8.2 | 7.2 | 11.5 | 16 | 4.3 | 18 | 11 | 8 | 41 | Ø3 | HTIR 25-8 |
| 25 | 13 | M10 | 10.2 | 7.2 | 11.5 | 19.6 | 3.4 | 18 | 14 | 11 | 47 | Ø3 | HTIR 25-10 |
| 25 | 23 | M16 | 17 | 7.2 | 11.5 | 23 | 3 | 18 | 15 | 15 | 56 | Ø3 | HTIR 25-16 |
| 35 | 12 | M10 | 10.2 | 8.2 | 13 | 17.9 | 4.8 | 18 | 10 | 10 | 43 | Ø3 | HTIR 35-10 |
| 50 | 11 | M8 | 8.2 | 10 | 15.5 | 21.6 | 5.5 | 24 | 15 | 11 | 56 | Ø3 | HTIR 50-8 |
| 50 | 10 | M10 | 10.2 | 10 | 15.5 | 21.6 | 5.5 | 24 | 15 | 11 | 56 | Ø3 | HTIR 50-10 |
| 50 | 9 | M12 | 13 | 10 | 15.5 | 21.6 | 5.5 | 24 | 15 | 11 | 56 | Ø3 | HTIR 50-12 |
| 50 | 22 | M16 | 17 | 10 | 15.5 | 25 | 4 | 24 | 15 | 15 | 62 | Ø3 | HTIR 50-16 |
| 70 | 8 | M10 | 10.2 | 12 | 17.8 | 25 | 5.8 | 24 | 15 | 13 | 58 | Ø3 | HTIR 70-10 |
| 70 | 7 | M12 | 13 | 12 | 17.8 | 25 | 5.8 | 24 | 15 | 13 | 58 | Ø3 | HTIR 70-12 |
| 70 | 18 | M16 | 17 | 12 | 17.8 | 26 | 5 | 24 | 15 | 15 | 62 | Ø3 | HTIR 70-16 |
| 95 | 6 | M8 | 8.2 | 13.5 | 20 | 27.8 | 6.5 | 24 | 17 | 15 | 62 | Ø4 | HTIR 95-8 |
| 95 | 5 | M10 | 10.2 | 13.5 | 20 | 27.8 | 6.5 | 24 | 17 | 15 | 62 | Ø4 | HTIR 95-10 |
| 95 | 4 | M12 | 13 | 13.5 | 20 | 27.8 | 6.5 | 24 | 17 | 15 | 62 | Ø4 | HTIR 95-12 |
| 95 | 19 | M16 | 17 | 13.5 | 20 | 28 | 6.5 | 24 | 17 | 15 | 64 | Ø4 | HTIR 95-16 |
| 120 | 3 | M12 | 13 | 15.4 | 23 | 32 | 7.6 | 29 | 18 | 17 | 71 | Ø4 | HTIR 120-12 |
| 120 | 20 | M16 | 17 | 15.4 | 23 | 32 | 7.6 | 29 | 18 | 17 | 71 | Ø4 | HTIR 120-16 |
| 150 | 2 | M12 | 13 | 17.4 | 26 | 36.4 | 8.6 | 29 | 21 | 18 | 76 | Ø4 | HTIR 150-12 |
| 150 | 1 | M16 | 17 | 17.4 | 26 | 36.4 | 8.6 | 29 | 21 | 18 | 76 | Ø4 | HTIR 150-16 |
| 185 | 21 | M16 | 17 | 19 | 28 | 38.5 | 9 | 32 | 21 | 19 | 82 | Ø4 | HTIR 185-16 |

**MCF/RCF/ICF
RING TONGUE TYPE CRIMPING SOCKETS/LUGS
FOR E-BEAM CABLES**

Spec. : EDTS-201 (as per active version)
Material : Copper
Finish : Tinned Plated



**Type-I
(Non Insulated)**



**Type-II
(Insulated with Metal Reinforcement)**

| Cable Size mm ² | MCF/ICF /RCF Item S.No. | DIMENSIONS IN MM | | | | | | | | | | | | | | | Type (I/II) | Product Code |
|-------------------------------|----------------------------------|------------------|-----|-----|-----|-----|---|---|------|------|------|------|-----|----|------|------|----------------|-----------------|
| | | E | A | C | D | F | B | K | H | L1 | J | A1 | C1 | J1 | C2 | L3 | | |
| 1.5 | 11 | 5.2 | 1.8 | 3.8 | 10 | 1 | 5 | 2 | 13 | 15 | 20 | 4.4 | 5.4 | 10 | 6 | 20 | II | HRRIR 1.5-5 |
| 2.5 | 10 | 6.4 | 2.7 | 5.3 | 12 | 1.3 | 6 | 2 | 14 | 16 | 22 | 7.6 | 7.1 | 15 | 8.6 | 25 | II | HRRIR 2.5-6 |
| 4 | 9 | 3.2 | 2.9 | 5.5 | 7.2 | 1.3 | 6 | 2 | 10 | 14.4 | 18 | 6.4 | 7.3 | 15 | 8.6 | 23.4 | II | HRRIR 4-3 |
| 4 | 8 | 6.4 | 2.8 | 5 | 12 | 1.1 | 6 | 2 | 12 | 14 | 20 | 6.4 | 6.9 | 15 | 8.6 | 23 | II | HRRIR 4-6 |
| 4 | 12 | 8.2 | 3.3 | 5.3 | 14 | 1 | 6 | 2 | 14.5 | 15.5 | 22.5 | 6.4 | 7.1 | 15 | 8.6 | 24.5 | II | HRRIR 4-8 |
| 6 | 3 | 5.2 | 3.6 | 6.2 | 9.6 | 1.3 | 8 | 2 | 15.8 | 21 | 25.8 | 0 | 0 | 0 | 0 | 0 | I | HRIR 6-5 |
| 6 | 4 | 6.4 | 3.6 | 6.2 | 12 | 1.3 | 8 | 2 | 19.8 | 23.8 | 29.8 | 0 | 0 | 0 | 0 | 0 | I | HRIR 6-6 |
| 6 | 5 | 8.2 | 3.6 | 6.2 | 16 | 1.3 | 8 | 2 | 26.5 | 28.5 | 36.5 | 0 | 0 | 0 | 0 | 0 | I | HRIR 6-8 |
| 6 | 6 | 10.2 | 3.6 | 6.2 | 16 | 1.3 | 8 | 2 | 26.5 | 28.5 | 36.5 | 0 | 0 | 0 | 0 | 0 | I | HRIR 6-10 |
| 6 | 7 | 13 | 3.6 | 6.2 | 19 | 1.3 | 8 | 2 | 28.5 | 29 | 38.5 | 0 | 0 | 0 | 0 | 0 | I | HRIR 6-12 |
| 10 | 2 | 6.4 | 4.8 | 7.4 | 16 | 1.3 | 8 | 2 | 28.3 | 30.3 | 38.3 | 0 | 0 | 0 | 0 | 0 | I | HRIR 10-6 |
| 10 | 1 | 8.2 | 4.8 | 7.4 | 16 | 1.3 | 8 | 2 | 28.3 | 30.3 | 38.3 | 0 | 0 | 0 | 0 | 0 | I | HRIR 10-8 |
| 10 | 13 | 10.5 | 5.2 | 8.4 | 22 | 1.6 | 8 | 2 | 39 | 38 | 49 | 10.9 | 9.9 | 23 | 12.9 | 53 | II | HRRIR 10-10 |



BLW APPROVAL



भारतीय रेल (रेल मंत्रालय)
बनारस रेल इंजन कारखाना
वाराणसी -221004 भारत
INDIAN RAILWAY (MINISTRY OF RAILWAY)
BANARAS LOCOMOTIVE WORKS
VARANASI-221004 INDIA

ISO 9001 :2015,
ISO 14001 :2015
OHS 18001 :2007
ISO 50001 :2011
ISO 3834-2:2005
NABL Accreditation
GreenCo Silver
IRIS Certification
5S Workplace Management System



Telfax: 0542- 2270104, email : dycdemdesing@gmail.com

CERTIFICATE OF REGISTRATION

M/s Brass Copper and Alloy India Ltd.
2nd Floor, A/2, Mehta Mahal,
Padmakar L KhandKe Mark,
Mathew Road, Opera House,
Mumbai, Maharashtra - 400004, India
Email-hemant@hexworldwide.com

Registration No.2022/BLW/DEV/EL/192

Sub:-Capacity Cum Capability Assessment for development & manufacturing and for three phase Electric Locomotives.

Ref: Firm's Request ID No.10563, Dt-26-11-21.

The assessment of firm as per following details, has been approved by competent authority for Development, manufacture & supply of following items for three phase Electric locomotives.

| SN | Item Description | CLW specification no. | Item ID |
|----|------------------|-----------------------|---------|
| 1- | Cable lug | CLW-ES-3-0130 | 2100250 |

Office Address:

M/s Brass Copper and Alloy India Ltd.
2nd Floor, A/2, Mehta Mahal,
Padmakar L Khandke Mark,
Mathew Road, Opera House,
Mumbai, Maharashtra – 400004
Mob No-7303546777,9820124846
Email-hemant@hexworldwide.com

Factory Address :

M/s Brass Copper and Alloy India Ltd.
Plat No-11, Vadkhamba Taluka, Kaparada
Dist-Valsad, Gujarat- 396126.
Mob No-7303546777,9820124846
Email-hemant@hexworldwide.com

This registration is valid subject to the following conditions:

1. The supply should meet the requirement of the Specification.
2. No design change or no change in Bill of Material, Establishment/Mfg and facilities shall be made without the prior approval of Dy. HOD
3. Notwithstanding this approval, Vendor is wholly and completely responsible for quality, field performance, reliability and life of the Item/Items supplied by him.
4. Complete Compliance to the condition given in purchase Order of BLW.
5. Copy of the Income Tax Clearance Certificate should be submitted to PFA each year before 31st December.
6. All future modifications/Changes in equipment, facilities and establishment at your works should be promptly communicated to BLW.
7. No Change in Location of any activity except / approval of BLW.

This is issued with approval of PCEE BLW on dated 19.05.2022

BLW/BSB/DnD/ELM/CCAR
Date-20.05.2022


(Angad Tiwari)
Dy. Chief Design Engineer- I

CERTIFICATE

CLW APPROVAL



IREPS

Indian Railways E-Procurement System

Unified Vendor Approval Module



HEMANT MAGANLAL MEHTA., BRASS
COPPER AND ALLOY INDIA LIMITED-
MUMBAI (IREPS ID- 41936)

17-Jun-2023
15:06:24 IST

Vendor Directory (Published)

| | | | |
|------------------|------------------|------------------------------------|--------------|
| Organization | Indian Railway ▼ | Item/Sub-Item Description/ID/PL No | 2100250 |
| Approving Agency | CLW ▼ | Specification | CLW-ES-3-013 |
| Department | --All-- ▼ | Drawing | |
| Sub-Directorate | ▼ | STR | |
| Reference Date | 17/06/2023 | Items Per Page | 5 |

Proceed

Total : 1

Vendor Directory status as of 17/06/2023 15:05

CLW Item ID: 2100250 , Cable Lug PL No: 29615458,
Spec: CLW/ES/3/0130 ALT. N, **Drw:** DRAWINGS,
STR: CLW/2020/ELDO/E/STR/0087 Rev 0,

Developmental Vendors (Vendor Count: 6)

M/s BRASS COPPER AND ALLOY INDIA LIMITED-MUMBAI (ID- 41936)

Regd Add. : 2ND FLOOR, A/2, MEHTA MAHAL,PADMAKAR L KHANDKE MARG, MATHEW ROAD,OPERA HOUSE, MUMBAI MUMBAI,Maharashtra - 400004, India

Unit-1

Plot No-11, At Vadkhambha, Tal.-Kaparada Valsad,Gujarat - 396126, India

Current status since - 03/06/2022
Approved by : BLW

This is conditional approval subject to
Prototype Approval : Supply (even for field trials, wherever applicable) shall commence only after approval of the prototype by the BLW.

CERTIFICATE

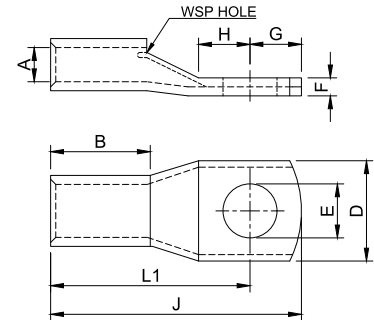
CLW LUGS

CABLE LUGS WITH INSPECTION WINDOW FOR WAG-9 & WAP-5 ELECTRIC LOCOMOTIVES

Material : Electrolytic Copper
Finish : Tinned Plated

| CLW POS NO. | STUD HOLE E | DIMENSIONS IN MM | | | | | | | | | | CLW FIG. No. | PRODUCT CODE |
|-------------|-------------|------------------|-------|------|------|------|------|------|------|------|------|--------------|--------------|
| | | A | | D | | F | G | H | L1 | B | J | | |
| | | MIN | MAX | MIN | MAX | | | | | | | | |
| P0208 | 8.4 | 2.3 | 2.55 | 11.5 | 12.5 | 0.6 | 8.0 | 9.0 | 17.0 | 8.0 | 25.0 | 1 | HCLW 2.5-8 |
| P0310 | 10.5 | 3.3 | 3.9 | 13.5 | 16.5 | 0.68 | 9.0 | 10.0 | 24.0 | 9.5 | 32.0 | 2 | HCLW 4-6-10 |
| P0410 | 10.5 | 4.6 | 4.9 | 13.8 | 18.5 | 0.6 | 9.0 | 11.0 | 24.5 | 9.5 | 34.5 | 3 | HCLW 10-10A |
| P0413 | 13.2 | 4.6 | 4.9 | 18.5 | 21.1 | 0.6 | 11.0 | 14.0 | 27.5 | 9.5 | 39.5 | 4 | HCLW 10-12 |
| P0913 | 13.2 | 8.8 | 9.58 | 19.5 | 21.5 | 2.1 | 11.0 | 14.0 | 35.5 | 14.0 | 47.5 | 5 | HCLW 25-12 |
| P0963 | 13.2 | 9.9 | 10.58 | 20.5 | 22.3 | 2.5 | 11.0 | 14.0 | 39.5 | 15.0 | 51.5 | 6 | HCLW 35-12 |

Specification No: CLW/ES/3/0130

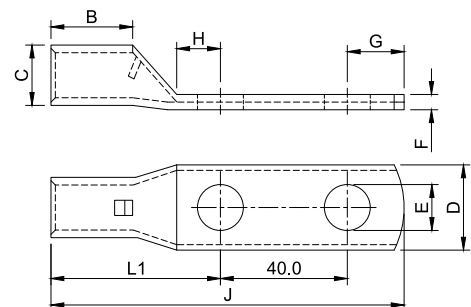


CABLE DOUBLE HOLE LUGS WITH RECTANGULAR NOTCH FOR WAG-9 & WAP-5 ELECTRIC LOCOMOTIVES

Material : Electrolytic Copper
Finish : Tinned Plated

| CLW POS NO. | STUD HOLE E | DIMENSIONS IN MM | | | | | | | | CLW FIG. No. | PRODUCT CODE |
|-------------|-------------|------------------|------|-----|------|------|------|------|-------|--------------|--------------|
| | | C | D | F | G | H | L1 | B | J | | |
| P0010 | 11.5 | 16.7 | 31.5 | 4.7 | 11.5 | 13.5 | 60.5 | 32.0 | 112.0 | 41 | HCLW2E 0010 |

Specification No: CLW/ES/3/0010

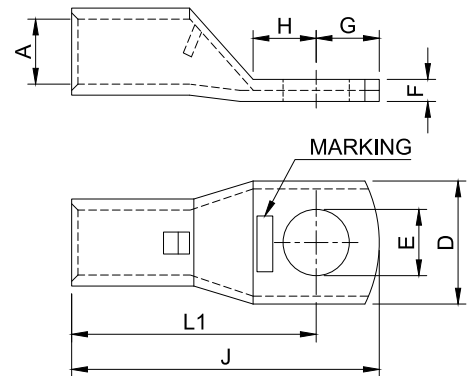


CLW LUGS

CABLE LUGS WITH RECTANGULAR NOTCH FOR WAG-9 & WAP-5 ELECTRIC LOCOMOTIVES

Material : Electrolytic Copper
Finish : Tinned Plated

| CLW POS NO. | STUD HOLE E | DIMENSIONS IN MM | | | | | | | CLW FIG. No. | PRODUCT CODE |
|-------------|-------------|------------------|------|-----|------|------|------|-------|--------------|----------------|
| | | A | D | F | G | H | L1 | J | | |
| P1008 | 8.4 | 10.0 | 19.0 | 2.9 | 10.0 | 10.5 | 38.0 | 48.0 | 7 | HCLW 35-8 |
| P0510 | 10.5 | 7.0 | 21.0 | 1.3 | 12.0 | 13.5 | 34.5 | 46.5 | 8 | HCLW 16-10 |
| P1006 | 6.4 | 10.0 | 19.0 | 2.9 | 8.0 | 8.5 | 36.0 | 44.0 | 9 | HCLW 35-6 |
| P1010 | 10.5 | 10.0 | 20.0 | 2.7 | 12.0 | 13.5 | 41.0 | 53.0 | 10 | HCLW 35-10 |
| P1912 | 13.2 | 13.5 | 25.0 | 3.9 | 16.0 | 17.5 | 53.5 | 69.5 | 11 | HCLW 70-12 |
| P0208 | 8.4 | 4.6 | 15.0 | 1.3 | 10.0 | 10.5 | 24.5 | 34.5 | 12 | HCLW 10-8 |
| P0508 | 8.4 | 7.0 | 18.0 | 1.5 | 10.0 | 10.5 | 31.5 | 41.5 | 13 | HCLW 16-8 |
| P0004 | 4.3 | 1.8 | 6.5 | 1.0 | 5.0 | 5.5 | 16.0 | 21.0 | 14 | HCLW 0.5-1-4 |
| P2410 | 10.5 | 15.2 | 28.5 | 4.2 | 12.0 | 13.5 | 51.0 | 63.0 | 15 | HCLW 95-10 |
| P1412 | 13.2 | 11.3 | 22.0 | 3.1 | 16.0 | 17.5 | 47.0 | 63.0 | 16 | HCLW 50-12 |
| P1410 | 10.5 | 11.3 | 21.0 | 3.3 | 12.0 | 13.5 | 43.0 | 55.0 | 17 | HCLW 50-10 |
| P1908 | 8.4 | 13.5 | 25.0 | 3.9 | 10.0 | 10.5 | 46.5 | 56.5 | 18 | HCLW 70-8 |
| P1910 | 10.5 | 13.5 | 25.0 | 3.9 | 12.0 | 13.5 | 49.5 | 61.5 | 19 | HCLW 70-10 |
| P3012 | 13.2 | 16.7 | 31.5 | 4.7 | 15.0 | 16.0 | 61.0 | 76.0 | 20 | HCLW 120-12 |
| P0205 | 5.3 | 4.6 | 10.0 | 2.0 | 6.0 | 6.0 | 20.0 | 26.0 | 21 | HCLW 10-5 |
| P3010 | 10.5 | 16.7 | 31.5 | 4.7 | 12.0 | 13.0 | 58.0 | 70.0 | 22 | HCLW 120-10 |
| P0015 | 5.3 | 2.4 | 8.5 | 1.0 | 6.0 | 6.5 | 18.0 | 24.0 | 23 | HCLW 1.5-2.5-5 |
| P0105 | 5.3 | 3.6 | 9.0 | 1.1 | 6.0 | 6.0 | 19.0 | 25.0 | 24 | HCLW 4-6-5 |
| P3710 | 10.5 | 19.2 | 35.5 | 5.1 | 12.0 | 13.0 | 65.0 | 77.0 | 25 | HCLW 150-10 |
| P0014 | 4.3 | 2.4 | 7.5 | 1.1 | 5.0 | 5.5 | 17.0 | 22.0 | 26 | HCLW 1.5-2.5-4 |
| P0708 | 8.4 | 8.9 | 17.0 | 2.8 | 10.0 | 10.5 | 34.0 | 44.0 | 27 | HCLW 25-8 |
| P0106 | 6.4 | 3.6 | 11.0 | 1.0 | 8.0 | 8.5 | 21.5 | 29.5 | 28 | HCLW 4-6-6 |
| P0005 | 5.3 | 1.8 | 7.5 | 0.8 | 6.0 | 6.5 | 17.0 | 23.0 | 29 | HCLW 0.5-1-5 |
| P0505 | 5.3 | 7.0 | 14.0 | 2.2 | 6.0 | 6.0 | 27.0 | 33.0 | 30 | HCLW 16-5 |
| P0108 | 8.4 | 3.6 | 14.0 | 0.7 | 10.0 | 10.5 | 23.5 | 33.5 | 31 | HCLW 4-6-8 |
| P1408 | 8.4 | 11.3 | 21.0 | 3.3 | 10.0 | 10.5 | 40.0 | 50.0 | 32 | HCLW 50-8 |
| P0210 | 10.5 | 4.6 | 18.0 | 1.0 | 12.0 | 13.5 | 27.5 | 39.5 | 33 | HCLW 10-10B |
| P0206 | 6.4 | 4.6 | 11.0 | 1.8 | 8.0 | 8.5 | 22.5 | 30.5 | 34 | HCLW 10-6 |
| P0706 | 6.4 | 8.9 | 17.0 | 2.8 | 8.0 | 8.5 | 32.0 | 40.0 | 35 | HCLW 25-6 |
| P3712 | 13.2 | 19.2 | 35.5 | 5.1 | 15.0 | 16.0 | 68.0 | 83.0 | 36 | HCLW 150-12 |
| P0204 | 4.3 | 4.6 | 10.0 | 2.0 | 6.0 | 6.0 | 20.0 | 26.0 | 37 | HCLW 10-4 |
| P4820 | 21.0 | 21.1 | 39.0 | 6.0 | 23.0 | 24.0 | 82.0 | 105.0 | 39/49 | HCLW 185-20 |
| P0016 | 6.4 | 2.4 | 9.0 | 0.9 | 8.0 | 8.5 | 20.0 | 28.0 | 45 | HCLW 1.5-2.5-6 |
| P0710 | 10.5 | 8.9 | 19.0 | 2.4 | 12.0 | 13.5 | 37.0 | 49.0 | 46 | HCLW 25-10 |
| P2408 | 8.4 | 15.2 | 28.5 | 4.2 | 10.0 | 10.5 | 48.0 | 58.0 | 47 | HCLW 95-8 |
| P4812 | 13.2 | 21.1 | 39.0 | 6.0 | 15.0 | 16.0 | 74.0 | 89.0 | 48 | HCLW 185-12 |
| P1406 | 6.4 | 11.3 | 21.0 | 3.3 | 10.0 | 10.5 | 40.0 | 50.0 | 50 | HCLW 50-65 |



Specification No: CLW/ES/3/0130



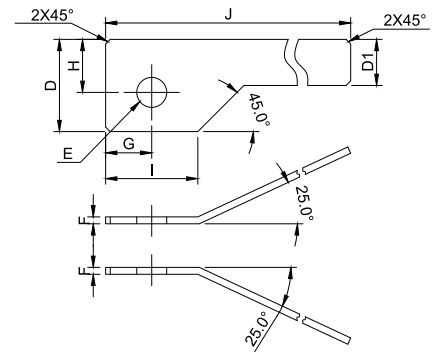
CLW LUGS

BUS BAR FOR WAG-9 & WAP-5 ELECTRIC LOCOMOTIVES

Material : Electrolytic Copper
Finish : Tinned Plated

| CLW POS NO. | STUD HOLE E | DIMENSIONS IN MM | | | | | | | CLW FIG. No. | PRODUCT CODE |
|-------------|-------------|------------------|------|-----|------|------|------|-------|--------------|--------------|
| | | D | D1 | F | G | H | I | J | | |
| P0001 | 13.0 | 40.0 | 20.0 | 3.0 | 20.0 | 23.0 | 40.0 | 170.0 | 38 | HC BB 0001 |

Specification No: CLW/ES/3/0130

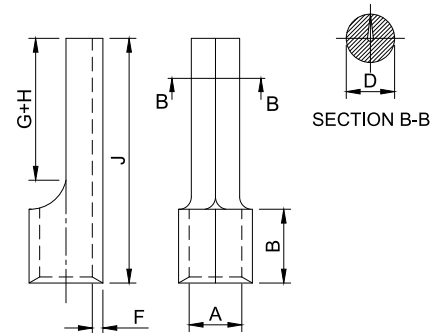


PIN TYPE CABLE LUGS FOR WAG-9 & WAP-5 ELECTRIC LOCOMOTIVES

Material : Electrolytic Copper
Finish : Tinned Plated

| CLW POS NO. | DIMENSIONS IN MM | | | | | | CLW FIG. No. | PRODUCT CODE |
|-------------|------------------|-----|-----|-----|------|------|--------------|--------------|
| | A | D | F | B | G+H | J | | |
| P0002 | 2.3 | 1.9 | 0.8 | 5.0 | 10.0 | 17.0 | 40 | HCP 2.5 |

Specification No: CLW/ES/3/0130

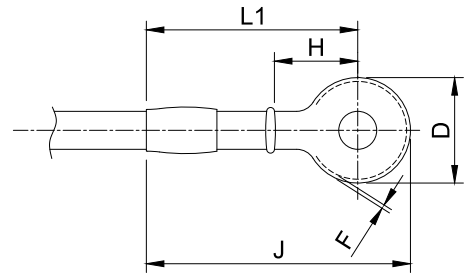


INSULATED CABLE LUGS FOR WAG-9 & WAP-5 ELECTRIC LOCOMOTIVES

Material : Electrolytic Copper
Finish : Tinned Plated

| CLW POS NO. | DIMENSIONS IN MM | | | | | CLW FIG. No. | PRODUCT CODE |
|-------------|------------------|-----|-----|------|------|--------------|--------------|
| | D | F | H | L1 | J | | |
| P0012 | 5.5 | 0.8 | 4.0 | 13.8 | 16.5 | 42 | HCRI 0012 |
| P0014 | 7.9 | 0.8 | 7.1 | 17.1 | 21.0 | 43 | HCRI 0014 |
| P0023 | 8.7 | 0.8 | 7.1 | 18.9 | 21.3 | 44 | HCRI 0023 |

Specification No: CLW/ES/3/0130

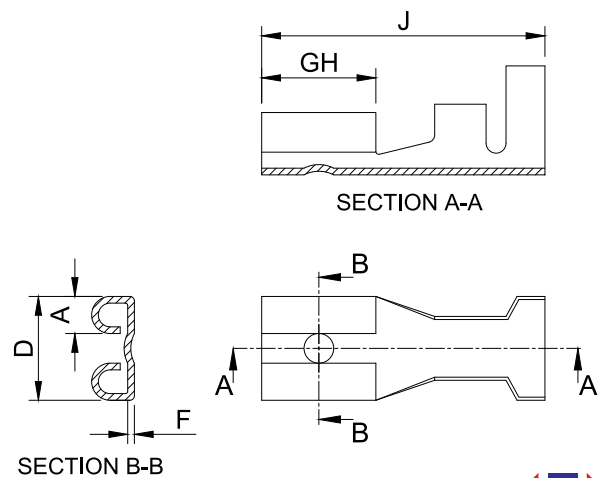


SNAP ON TYPE CABLE LUGS FOR WAG-9 & WAP-5 ELECTRIC LOCOMOTIVES

Material : Electrolytic Copper
Finish : Tinned Plated

| CLW POS NO. | DIMENSIONS IN MM | | | | | CLW FIG. No. | Product Code |
|-------------|------------------|-----|-----|-----|------|--------------|--------------|
| | J | GH | D | A | F | | |
| P0511 | 19.1 | 7.7 | 6.5 | 2.3 | 0.44 | 51 | HCSP 0511 |

Specification No: CLW/ES/3/0130

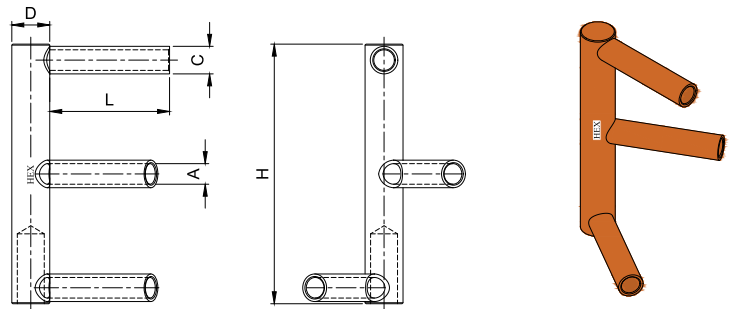


HIGH SPEED RAIL CONNECTORS

CRIMP CORNER CONNECTOR FOR PILLAR FOUNDATION EARTHING

Material : Electrolytic Copper
Finish : Natural / Tinned Plated

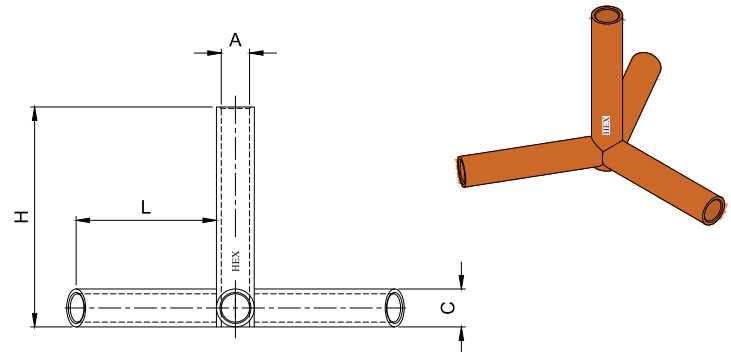
| CABLE SIZE MM ² | DIMENSIONS IN MM | | | | | PRODUCT CODE |
|----------------------------|------------------|------|------|------|-------|--------------|
| | A | C | L | D | H | |
| 60.0 | 10.3 | 13.8 | 60.0 | 19.0 | 130.0 | HSRC 60-CC |
| 100.0 | 13.5 | 19.0 | 60.0 | 19.0 | 130.0 | HSRC 100-CC |



CRIMP MIDDLE CONNECTOR FOR PILLAR FOUNDATION EARTHING

Material : Electrolytic Copper
Finish : Natural / Tinned Plated

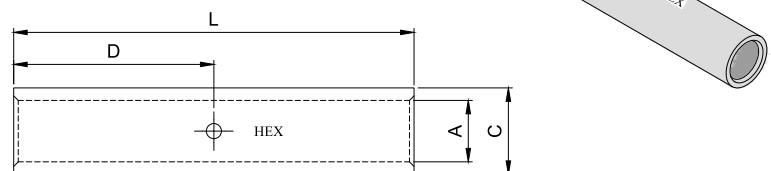
| CABLE SIZE MM ² | DIMENSIONS IN MM | | | | PRODUCT CODE |
|----------------------------|------------------|------|------|------|--------------|
| | A | C | L | H | |
| 60.0 | 10.3 | 13.8 | 60.0 | 80.0 | HSRC 60-MC |
| 100.0 | 13.5 | 19.0 | 60.0 | 80.0 | HSRC 100-MC |



IN - LINE CRIMP CONNECTOR

Material : ETP Copper
Finish : Natural / Tinned Plated

| CABLE SIZE MM ² | DIMENSIONS IN MM | | | | PRODUCT CODE |
|----------------------------|------------------|------|------|------|--------------|
| | A | C | L | D | |
| 60.0 | 10.3 | 13.8 | 76.0 | 38.0 | HSRC 60-IC |
| 100.0 | 13.5 | 19.0 | 88.0 | 44.0 | HSRC 100-IC |

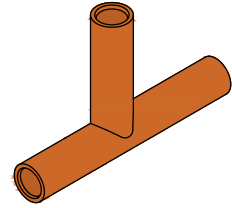
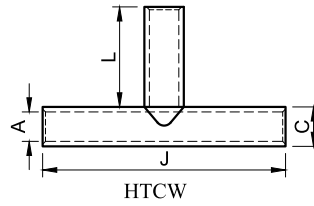


HIGH SPEED RAIL CONNECTORS

T - CONNECTORS

Material : Electrolytic Copper
Finish : Natural / Tinned Plated

| CABLE SIZE MM ² | DIMENSIONS IN MM | | | | PRODUCT CODE |
|-------------------------------|------------------|------|------|------|-----------------|
| | A | C | J | L | |
| 60.0 | 10.3 | 13.8 | 85.0 | 35.0 | HTCW - 60 |
| 100.0 | 13.5 | 19.0 | 95.0 | 38.0 | HTCW - 100 |

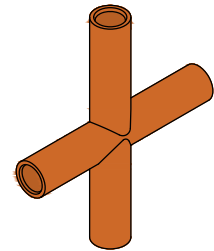
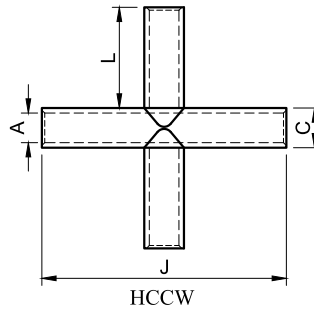


* Add 'T' after Product Code for Tinned Connectors

CROSS - CONNECTORS

Material : Electrolytic Copper
Finish : Natural / Tinned Plated

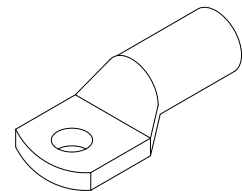
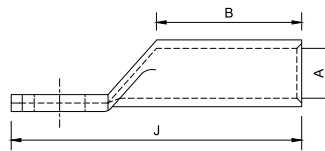
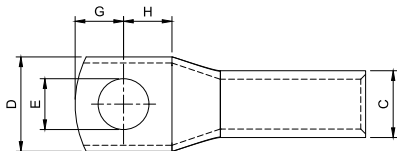
| CABLE SIZE MM ² | DIMENSIONS IN MM | | | | PRODUCT CODE |
|-------------------------------|------------------|------|------|------|-----------------|
| | A | C | J | L | |
| 60.0 | 10.3 | 13.8 | 85.0 | 35.0 | HCCW - 60 |
| 100.0 | 13.5 | 19.0 | 95.0 | 38.0 | HCCW - 100 |



* Add 'T' after Product Code for Tinned Connectors

TUBULAR COMPRESSION CABLE LUGS

Material : Electrolytic Copper
Finish : Natural / Tinned Plated



| CABLE SIZE MM ² | DIMENSIONS IN MM | | | | | | | | PRODUCT CODE |
|-------------------------------|------------------|------|------|------|------|------|------|------|-----------------|
| | E | A | C | D | G | H | B | J | |
| 60 | 10.5 | 10.3 | 13.8 | 19.5 | 10.0 | 10.0 | 30.0 | 60.0 | HUTD 60-10 |
| 60 | 21.0 | 10.3 | 13.8 | 30.0 | 20.0 | 20.0 | 30.0 | 80.0 | HUTD 60-20 |
| 60 | 23.0 | 10.3 | 13.8 | 30.0 | 20.0 | 20.0 | 30.0 | 80.0 | HUTD 60-22 |
| 100 | 10.5 | 13.5 | 19.0 | 27.0 | 12.0 | 14.0 | 40.0 | 76.0 | HUTD 100-10 |
| 100 | 21.0 | 13.5 | 19.0 | 30.0 | 20.0 | 20.0 | 40.0 | 90.0 | HUTD 100-20 |
| 100 | 23.0 | 13.5 | 19.0 | 30.0 | 20.0 | 20.0 | 40.0 | 90.0 | HUTD 100-22 |

BHOPAL METRO APPROVAL



M/s KPTL-GULERMAK JV
Lead Member: M/s Kalpataru Power Transmission Ltd.
B-5, 4th Floor, Tower – 3, Okaya Centre, Sector -62
Noida – 201309 (Uttar Pradesh), India
Tel: 01206742500

Bhopal & Indore Metro General Consultant
Bhopal Smart City
1st Floor, BMC Building
Sector A, Berkheda
Bhopal, 462022
Madhya Pradesh
India

14-July-2023

Contract: Engineering supply, Erection Testing and Commissioning of Power supply Receiving Sub Station (RSS), Traction Sub-Station (TSS), Auxiliary Sub-Station (ASS), 750V DC Third Rail and SCADA System" for Bhopal Metro Rail Project. LoA No. 1351/MPMRCL/2022, dated:05.09.2022

Subject: BH-08: Submission of Manufacturing Documentation (GA & GTP) of HD lug from M/s HEX

Reference: BH-08-BIG-PST-LTR-00959

Reference Communication: BH-08-KPTL-GUL-CID-LTR-01037 Dated 09.06.2023
BH-08-KPTL-GUL-CID-LTR-01187 Dated 13.07.2023

Kind Attention: Mr. Nikesh Verma (Contractor's Representative)

Dear Sir,

Please Find attached Engineer's DRS for following;

| Sr No. | Description | DRS No. | Revision | Status |
|--------|--|------------------------|----------|--------|
| 1 | BH-08: Submission of Manufacturing Documentation (GA & GTP) of HD lug from M/s HEX | BH-08-BIG-PST-DRS-0368 | 1 | SONO |

Yours Faithfully,

Pankaj Agrawal
Dy. Project Director (Systems)
Bhopal Metro Rail Project

Copy to: 1. GM (Rolling Stock), MPMRCL
2. Additional Director (Technical), MPMRCL

Enclosure: BH-08-BIG-PST-DRS-0368 (R1)

INDORE METRO APPROVAL



To,
KPTL-GULERMAK JV
Lead Member: M/s Kalpataru Power Transmission
Ltd, Tower 3, IV floor, Okaya Centre B-5,
Sector 62, Gautam Buddha Nagar, Noida,
Uttar Pradesh - 201309

Bhopal & Indore Metro General Consultant
10th Floor, Apollo Premier, Near Vijay
Nagar Square, Indore, 452010
Madhya Pradesh,
India

Date: 15th July 2023

Contract: MPMRCL/Indore Metro/Package IN-09
Subject: Submission of GA, GTP for 1.1 & 3.3 kV 400 Sq.mm Lugs M/s. HEX.
Letter Reference: IN-09-BIG-PST-LTR-00555
Reference Communication: 1) IN-09-KPTL-GUL-COM-LTR-00896, dated: 10.07.2023
2) IN-09-KPTL-GUL-COM-LTR-00925, dated: 14.07.2023
3) IN-09-BIG-PST-LTR-00550, dated 14.07.2023

Kind Attention: Mr. Anjay Kumar Singh Deo

Dear Sir,

Please find the Engineer's DRS for the following:

| Sr. no. | Description | DRS No. | Status |
|---------|---|-----------------------------|--------|
| 1 | Submission of GA, GTP for 1.1 & 3.3 kV 400 Sq.mm Lugs M/s. HEX. | IN-09-BIG-PST-DRS-0144 (R1) | SONO |

Yours Faithfully,

Arvind Kumar Singh
Dy. Project Director
Indore Metro Rail Project

Enclosure: Document Review Sheet.

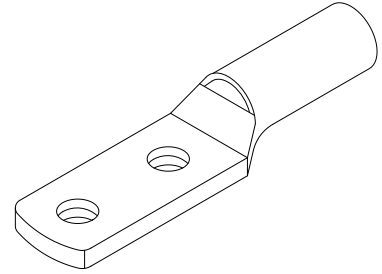
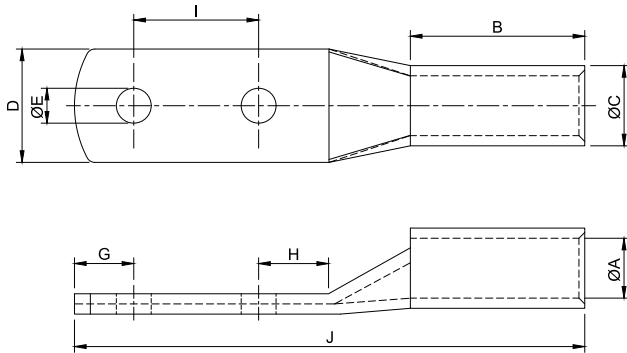
Copy to: 1. Additional Director (Technical), MPMRCL
2. General Manager (Rolling Stock), MPMRCL
3. AGM, Traction, MPMRCL

CERTIFICATE

METRO LUGS

CRIMPING TYPE 2 HOLE TINNED COPPER CABLE TERMINAL ENDS

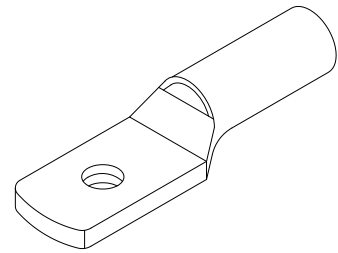
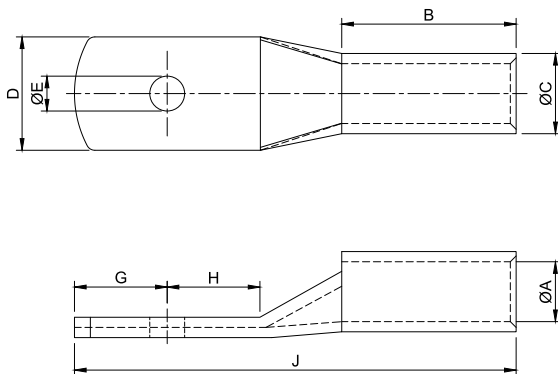
Material : Copper
Finish : Electro Plated



| CABLE MM2 | STUD HOLE E | DIMENSIONS IN MM | | | | | | | | PRODUCT CODE |
|--------------|----------------|------------------|------|------|------|------|------|------|-------|-----------------|
| | | A | C | D | G | H | I | B | J | |
| 400 | 14.5 | 28.5 | 36.5 | 52.5 | 18.0 | 18.0 | 44.5 | 84.0 | 185.5 | HKPT 400-2E-14 |

CRIMPING TYPE TINNED COPPER CABLE TERMINAL ENDS

Material : Copper
Finish : Electro Plated



| CABLE MM2 | STUD HOLE E | DIMENSIONS IN MM | | | | | | | PRODUCT CODE |
|--------------|----------------|------------------|------|------|------|------|------|-------|-----------------|
| | | A | C | D | G | H | B | J | |
| 400 | 14.5 | 28.5 | 36.5 | 52.5 | 24.0 | 26.0 | 70.0 | 140.0 | HKPT 400-14-23 |



RDSO
(Signal, S AND T)
Final Decision Letter

Letter No - RDSO/108/1901/00023807

Dated 18/08/2022

To

M /s BRASS COPPER AND ALLOY INDIA LIMITED-MUMBAI
2ND FLOOR, A/2, MEHTA MAHAL,PADMAKAR L KHANDKE MARG, MATHEW ROAD,OPERA HOUSE,
MUMBAI MUMBAI,Maharashtra - 400004, India

Sub: Decision of Fresh Registration Request

Ref: Your registration request ID **13510** Dated **19/05/2021**

Your application under reference has been processed.

After detailed processing, competent authority has decided the inclusion of your name in the Vendor directory as per the following details: -

| | |
|--------------------------------|---|
| Name of the firm | M /s BRASS COPPER AND ALLOY INDIA LIMITED-MUMBAI |
| Registered Address of the Firm | 2ND FLOOR, A/2, MEHTA MAHAL,PADMAKAR L KHANDKE MARG, MATHEW ROAD,OPERA HOUSE, MUMBAI MUMBAI,Maharashtra - 400004, India |
| Mfg. Unit Details | Unit-1, Plot No-11, At Vadkhambha, Tal.:- Kaparada undefined Valsad,Gujarat - 396126, India |

Items for which request is approved

| Item ID: 3100250, Code of practice for earthing and bonding system for signaling equipment | | | |
|--|--|---------------|---------------------|
| # | Sub Item | Category | Capacity(Per Annum) |
| 1 | ID: 3100250001, Code of practice for earthing and bonding system for signaling equipment | Developmental | 636360 |

| | |
|---------------------------|------------|
| Date of Decision | 18/08/2022 |
| Next Quality Audit Due on | |

Additional Remarks

| # | Details |
|---|------------------|
| | No remarks added |

Attached Documents

| # | Description | File Name |
|---|---------------------|--|
| 1 | Approved QAP | ApprovedQAPBrass.pdf |
| 2 | Terms and Condition | termsandconditionbrass.pdf |

Digitally Signed by
AVADHESH KUMAR YADAV
Director Sig 3

EARTHING & BONDING SYSTEM

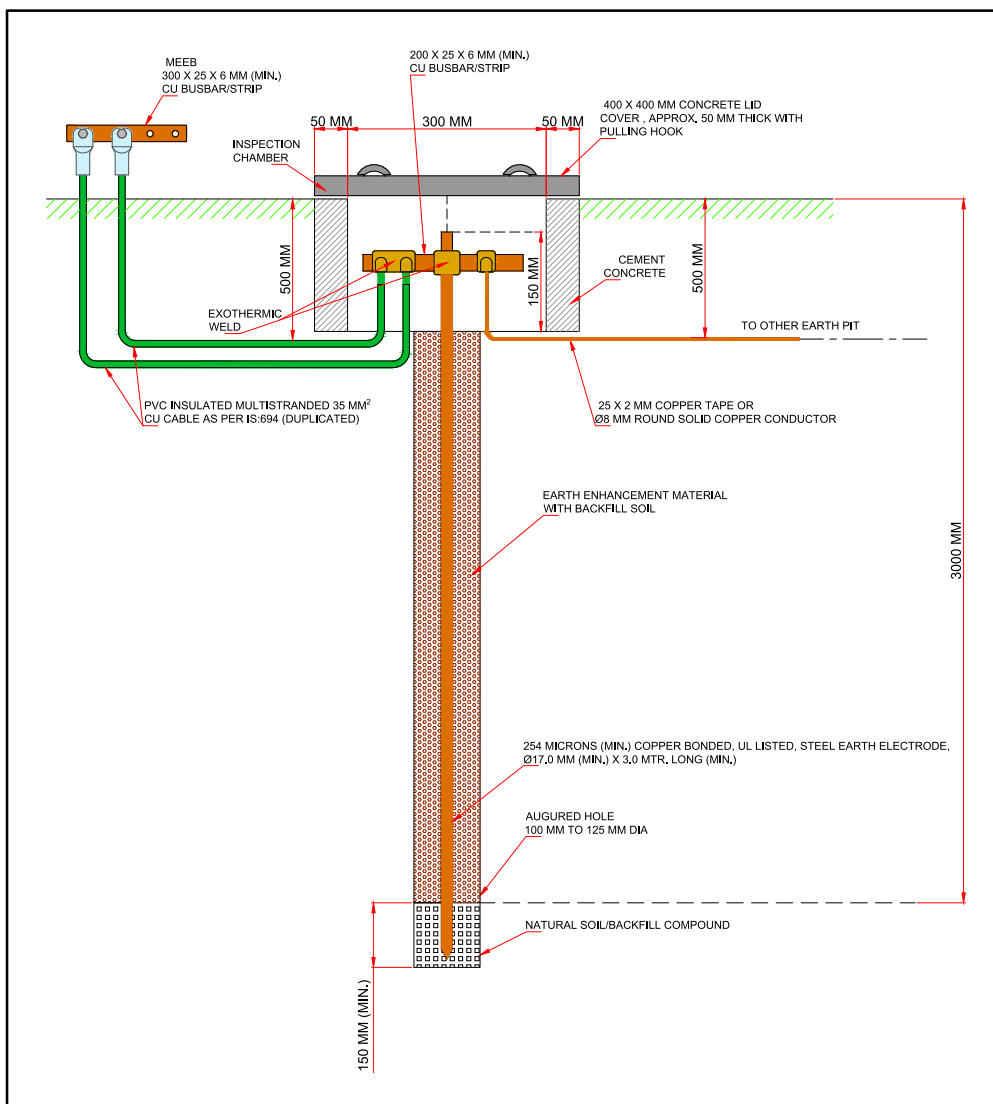
AS PER RDSO/SPN/197, VERSION 1.0

This RDSO Code of Practice for the Earthing & Bonding of Signaling Equipment emphasizes the importance that should be accorded to an Earthing system.

It's scope covers the Earthing & Bonding system to be adopted for Signaling Equipment with solid state components which are more susceptible to damage due to surges, transients and over voltages being encountered in the system due to lightning, sub-station switching etc. These signaling equipment include Electronic Interlocking, Integrated Power supply equipment, Digital Axle counter, Data logger etc.

HEX has successfully developed the Earthing & Bonding System as per this specification. RDSO has approved the same & hence we have been included in RDSO's Vendor Directory.

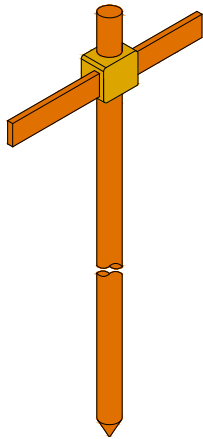
The components of this Earthing & Bonding system are : Earth Electrode, Earth Enhancement Material, Earth Pit Chamber, Equipotential Earth Busbar, Connecting Cables & Tape/Strip and other associated accessories. The same can be seen in the following diagram.



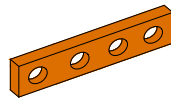
EARTHING & BONDING SYSTEM COMPONENTS

AS PER RDSO/SPN/197, VERSION 1.0

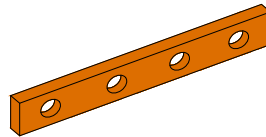
| S.NO. | COMPONENT DESCRIPTION | SIZE | QUANTITY |
|-------|--|--|-------------------------|
| 1 | 254 Microns (min.) Copper Bonded, UL listed, Steel Earth Electrode | Ø 17 mm (min.) X Length 3 mtrs. (min.) | 1 |
| 2 | Copper busbar/strip to be Exothermically welded to the Earth Electrode | 200 X 25 X 6 (mm min.) | 1 |
| 3 | Earth Enhancement Material for the Earth Rod | 10 kgs./Bag | Min. 30 kgs/Rod |
| 4 | Earth Enhancement Material for the Interconnecting conductor | 10 kgs./Bag | Min. 10 kgs./mtr. |
| 5 | Copper busbar/strip for Main Equipotential Earth Busbar (MEEB) | 300 X 25 X 6 (mm min.) | 1 |
| 6 | Copper busbar/strip for Sub Equipotential Earth Busbar (SEEB) | 150 X 25 X 6 (mm min.) | 1 |
| * | 7 Multi-stranded, single core, PVC insulated, copper cable as per IS:694 for connecting individual equipment to SEEB using tinned copper lugs with stainless steel nuts and bolts. | 10 sq. mm | As per site requirement |
| * | 8 Multi-stranded, single core, PVC insulated, copper cable as per IS:694 for connecting SEEB to MEEB using tinned copper lugs with stainless steel nuts and bolts. | 16 sq. mm | As per site requirement |
| * | 9 Multi-stranded, single core, PVC insulated, copper cable as per IS:694 for connecting SPD's to MEEB using tinned copper lugs with stainless steel nuts and bolts. | 16 sq. mm | As per site requirement |
| * | 10 Multi-stranded, single core, PVC insulated, copper cable as per IS:694 (Duplicated) used for connecting MEEB to the main Earth Electrode. | 35 sq. mm | As per site requirement |
| 11 | Copper tape OR Round solid copper conductor to connect Main earth pit to other earth pit in case of loop earth. | 25 X 2 mm OR Ø 8 mm | As per site requirement |
| 12 | Exothermic Moulds, Weld Powder & Accessories | - | As per site requirement |



Copper Bonded Earth Electrode with Copper Busbar/Strip



SEEB
150 X 25 X 6 mm (Min.)
Cu Busbar/Strip



MEEB
300 X 25 X 6 mm (Min.)
Cu Busbar/Strip



* Multi standard Single Core PVC Insulated Copper Cable



Copper Tape



Round Solid Copper Conductor



Earth Enhancement Material

* NOTE : Colour of cable insulation will depend on market availability.



CLASS A ESE LPS APPROVAL

रेल मंत्रालय
Ministry of Railways
भारत सरकार
Govt. of India



मुख्य परियोजना निदेशक
Chief Project Director
रेल विद्युतीकरण, जयपुर
Railway Electrification, Jaipur

CPD/S&T/RE/JP/ EPC-06/Call letters

Date:-05.07.2023

Executive Director,
RITES, Mumbai.

Sub.- Request letter for RITES inspection.

Ref:- 1.This office letter No. CPD/S&T/RE/JP/101/EPC-06(Mod), Dated 07.06.23
2.This office letter No. CPD/S&T/RE/JP/101/EPC-06(Mod), Dated 08.06.23.

With reference to above, the following material was put up for RITES Inspection vide letter under ref. 1 & 2.

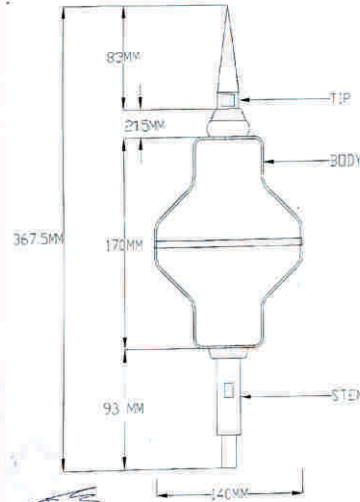
The material is again being put up for physical inspection (for Dimensional check) with test report and invoice of copper cable size 70sq.mm .

The supporting documents enclosed herewith are:-

1. QAP documents
2. Test Report
3. MOU between Brass Copper & alloy & SGI India. Pvt. Ltd
4. Dimension
5. Test report and invoice of copper cable size 70sq.mm

For necessary action please.

- Encl: - 1. QAP documents
2. Test Report
3. MOU between Brass Copper & alloy & SGI India. Pvt. Ltd
4. Dimension
5. Test report and invoice of copper cable size 70sq.mm



NOTED
ALL DIMENSIONS ARE IN MM
12/18/2023 - J.S.K.

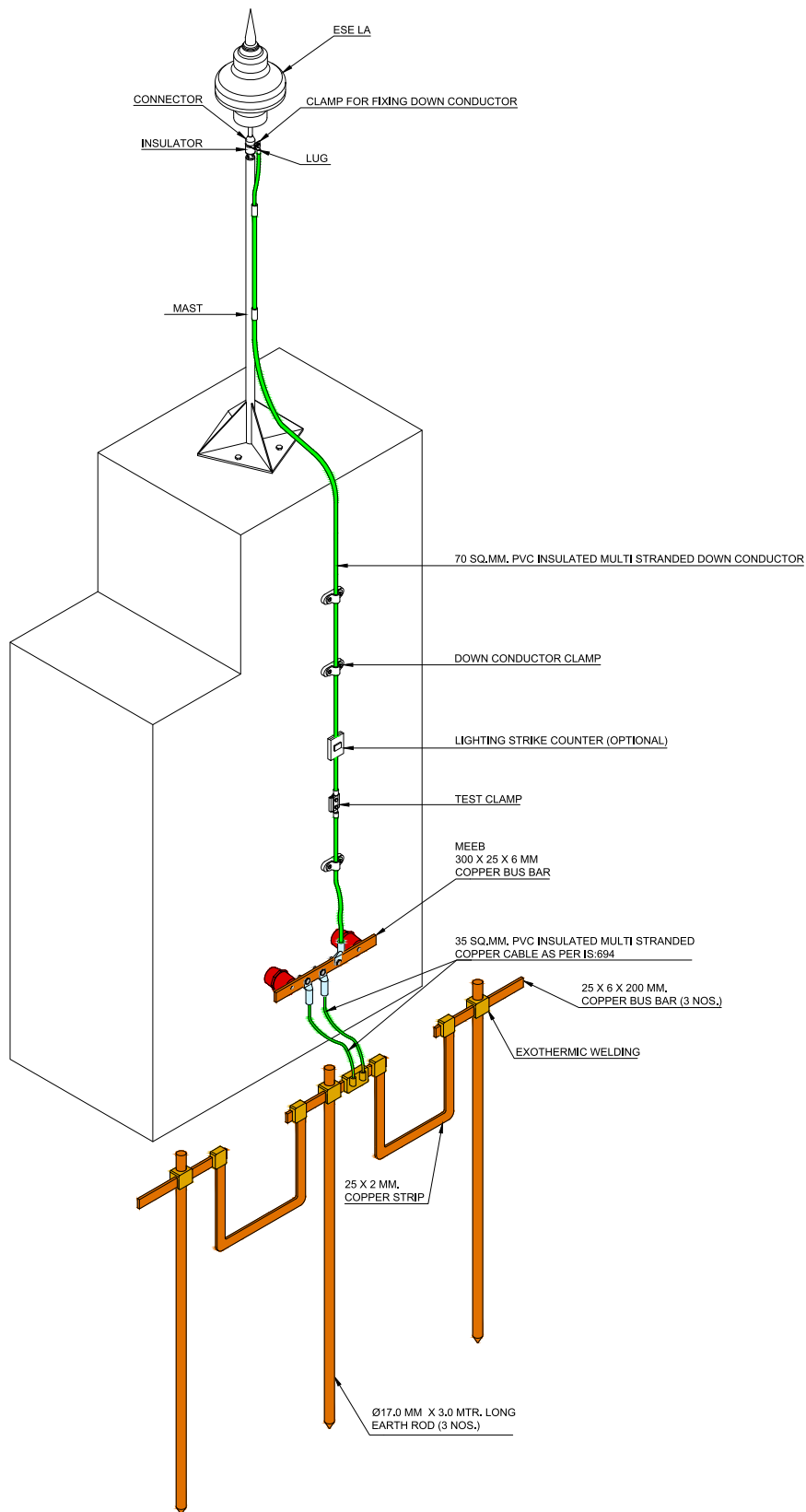
May 5-23
Dy.CS/TE/RE/JP
उप मुख्य संकेत एवं दूर. इंजीनियर
Dy. Chief Signal & Telecom Engineer
रेल विद्युतीकरण, जयपुर
Railway Electrification, JAIPUR

2nd floor, Rail Nirman Bhavan, Ganga Marg, Jagatpura, Jaipur-302017
Phone No: 0141-2226100, Fax No: 0141-2226110, email: cpmjp@core.railnet.gov.in

CERTIFICATE

CLASS A ESE LPS LAYOUT

ACTIVE LIGHTNING ARRESTOR OF CLASS-"A" FOR BUILDING PROTECTION AS PER STANDARD NFC-17-102
(BASED ON CORE SPECIFICATION)



WELDING MATERIALS FOR TRACK CIRCUIT APPLICATIONS

As per RDSO Standard No. IRS:S 103-2004

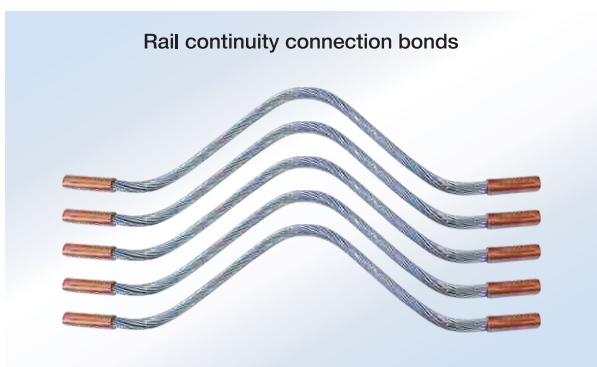
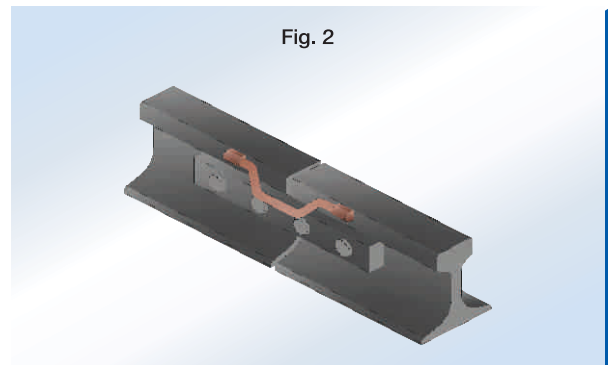
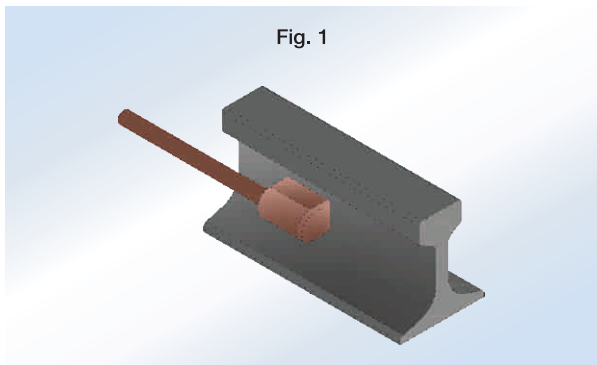
HEXWELD Exothermic welded connections made specifically for the ever-demanding railway applications, can be counted upon to provide the highest level of reliability and performance 24 hours x 7 days x 365 days of the year. The scientifically formulated and tested weld material ensures high quality track circuit connections to the rail with electrical continuity and adequate bonding strength. The final joint is achieved in such a way that molecular bonding of the welded components involved takes place.

Superior properties of HEXWELD joints: -

- Permanent, maintenance free and periodical visual inspection only will suffice.
- Not affected by high current surges.
- Will not loosen due to vibrations or corrode at the point of weld.
- Shall be able to sustain physical impacts, which may be experienced under field conditions.
- Electrical resistance and other properties shall not deteriorate with ageing under severe Indian climatic conditions.

These welding systems are useful in the following Railway applications in signaling: –

- Track Lead Junction Box (TLJB) / Bootleg circuit connections to rail. (Fig.1)
- Rail continuity connection bonds.(Fig.2)





Company Policy :

◀ Corporate Goal ▶

Maintain a satisfied customer base with quality products that meet application requirements completely.

We aim to secure the existing customers and concurrently augment new customers to the HEX Family.

◀ Company Culture ▶

A quality product is the result of Company culture. The service, the people behind the product, these are the assets that set us apart from the competition.

◀ Technologies ▶

Employ the latest technologies in manufacturing with the intent to increase quality of product, reduce wastage, meet environmental norms and increase production.

◀ Planning ▶

Strict adherence to ABC analysis for production planning and inventory management. We employ ERP tools to integrate our sales, production, purchase and dispatch divisions.

◀ Product Quality ▶

Continuously endeavor to improve product quality and reach a zero defect manufacturing. Contribute to the efficient utilization of the national resources.

◀ HEX Family - Team Work ▶

At HEX house we instill family values into our working environment. We believe, as the individual spends a major part of his day at work, being in a close knit and congenial environment enhances their productivity.

We extend similar values in our dealings with our distributors and channel partners.

IMPORTANT NOTE

HEX takes every precaution to ensure the performance of its products and recommendations given are in good faith. However, HEX cannot control the installation of our products and therefore cannot give any warranty or result obtained. It is the responsibility of the customer to assume all risks and liabilities incurred in the use of HEX products, whether used alone or in conjunction with other products.

OUR GLOBAL PRESENCE



OVERSEAS OFFICES : UK • Dubai • Malaysia • RSA • Nigeria



BRASS COPPER & ALLOY (I) LTD.

15, Mehta Mahal, 2nd Floor, Mathew Road, Charni Road (E), Mumbai - 400 004.

Tel. : +91 22 4960 8008 • E-mail : railways@hexworldwide.com

www.hexworldwide.com